



HL EBONY SON OF ZEUS

Registration 1: BA192623
Breeder: Hudson Longhorns
Owner: E&L TEXAS Longhorn Farms

DNA tested by UC Davis to possess the Dominant Black gene over a Dominant Wild Gene. This means that 50% his offspring be black, black/white or blue. 50% will carry the wild gene. Wild gene calves are born brown, brown/white with a black shiny nose, hooves and most often times with a black switch, although the switch doesn't have to be solid black. These calves will turn black, black/white or parker brown. Brindle is also a wild

TTT: 71.1250 on 09/30/2018



Courtesy of Russell Freeman

Zeus EOT 9E5



HL EBONY SON OF ZEUS



BREWS SURPRISE



JP RIO GRANDE



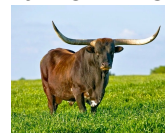
BL CATCHIT



BREW'S ROLEX

BREW BC 666 TWIGGY

J.R. GRAND SLAM



TX W Lucky Lady



FARLAP CHEX



BL PATCHIT



MI TIERRA CAPTIN HOOK

BREWS PRAIRIE SHADOW

C.B. Blue Chip



BREW PISTOL PACKIN MAMA



<http://www.hiredhandsoftware.com>